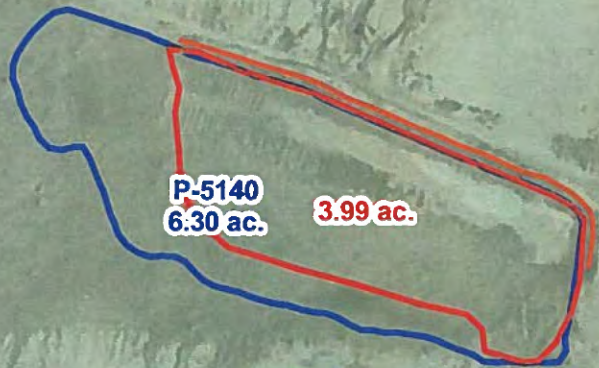






0 125 250 500 Feet

N



2009 Imagery

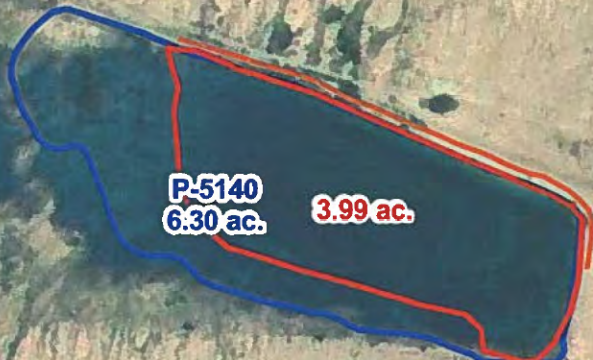
**Legend**

-  Remote\_Interp\_Spillways
-  Remote\_Survey\_Impoundment\_Berms
-  OSE Pond
-  KBE Pond



0 125 250 500 Feet

N



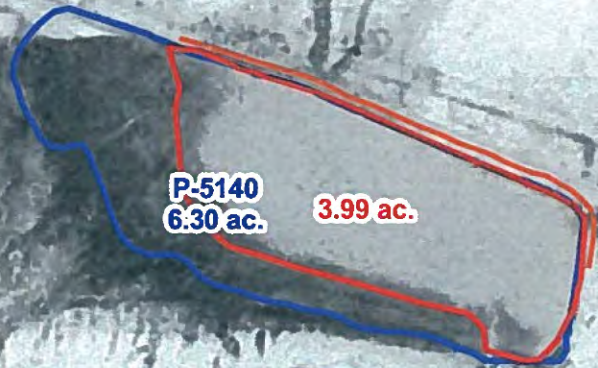
2005 Imagery

**Legend**

- ✕ Remote\_Interp\_Spillways
- Remote\_Survey\_Impoundment\_Berms
- ▭ OSE Pond
- ▭ KBE Pond







0 125 250 500 Feet



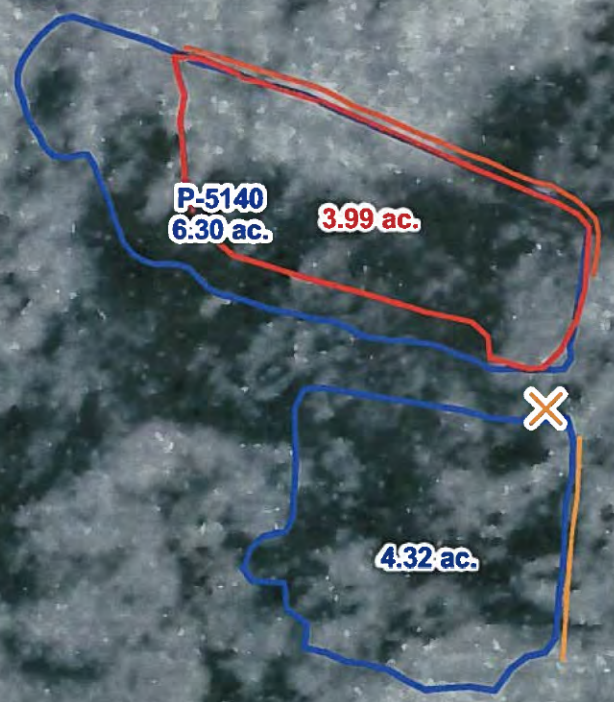
1996 Imagery

**Legend**

-  Remote\_Interp\_Spillways
-  Remote\_Survey\_Impoundment\_Berms
-  OSE Pond
-  KBE Pond







0 125 250 500 Feet



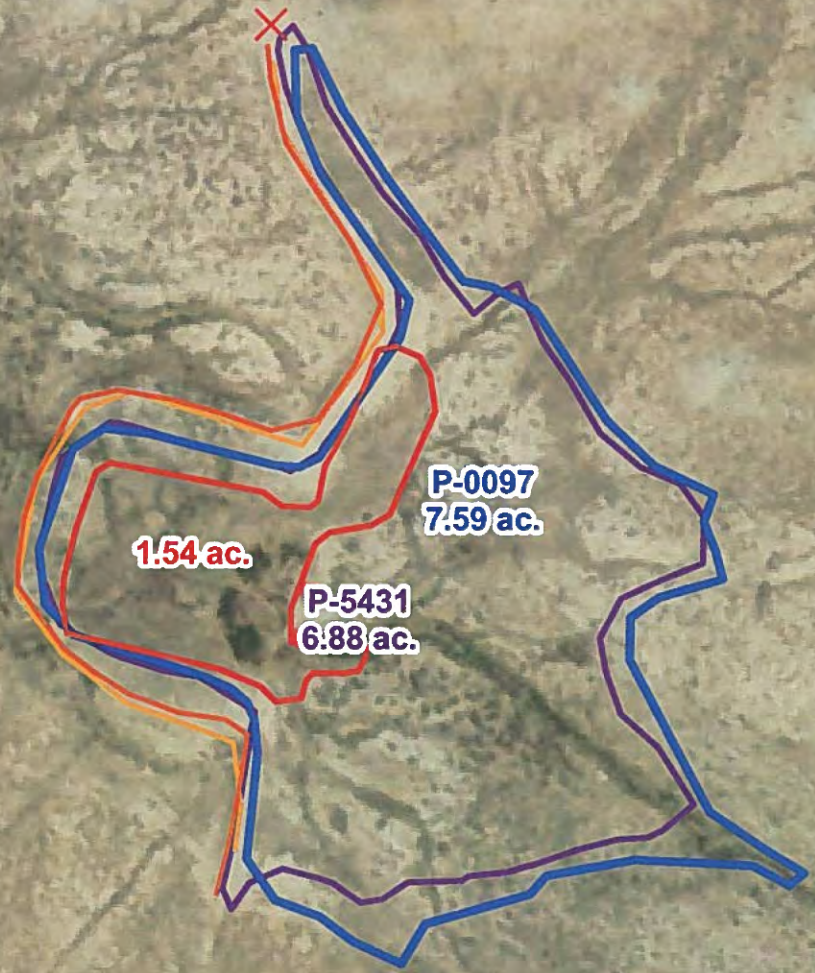
1965 Imagery

**Legend**

-  Remote\_Interp\_Spillways
-  Remote\_Survey\_Impoundment\_Berms
-  OSE Pond
-  KBE Pond










0 125 250 500 Feet



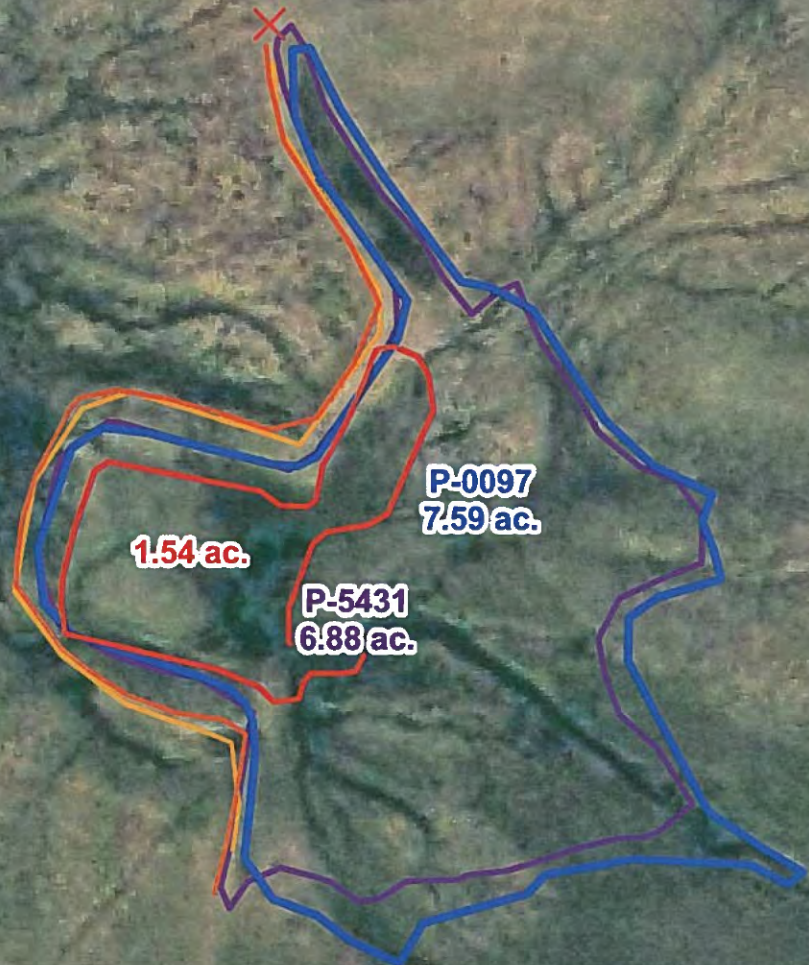
2009 Imagery

**Legend**

-  Field Survey KBE Pond
-  OSE Pond
-  KBE Pond
-  Remote\_Interp\_Spillways
-  Field\_Survey\_Spillways
-  Remote\_Survey\_Impoundment\_Berms
-  Field\_Survey\_Impoundment\_Berms

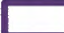








0 125 250 500 Feet



2005 Imagery

**Legend**

-  Field Survey KBE Pond
-  OSE Pond
-  KBE Pond
-  Remote\_Interp\_Spillways
-  Field\_Survey\_Spillways
-  Remote\_Survey\_Impoundment\_Berms
-  Field\_Survey\_Impoundment\_Berms



0 125 250 500 Feet



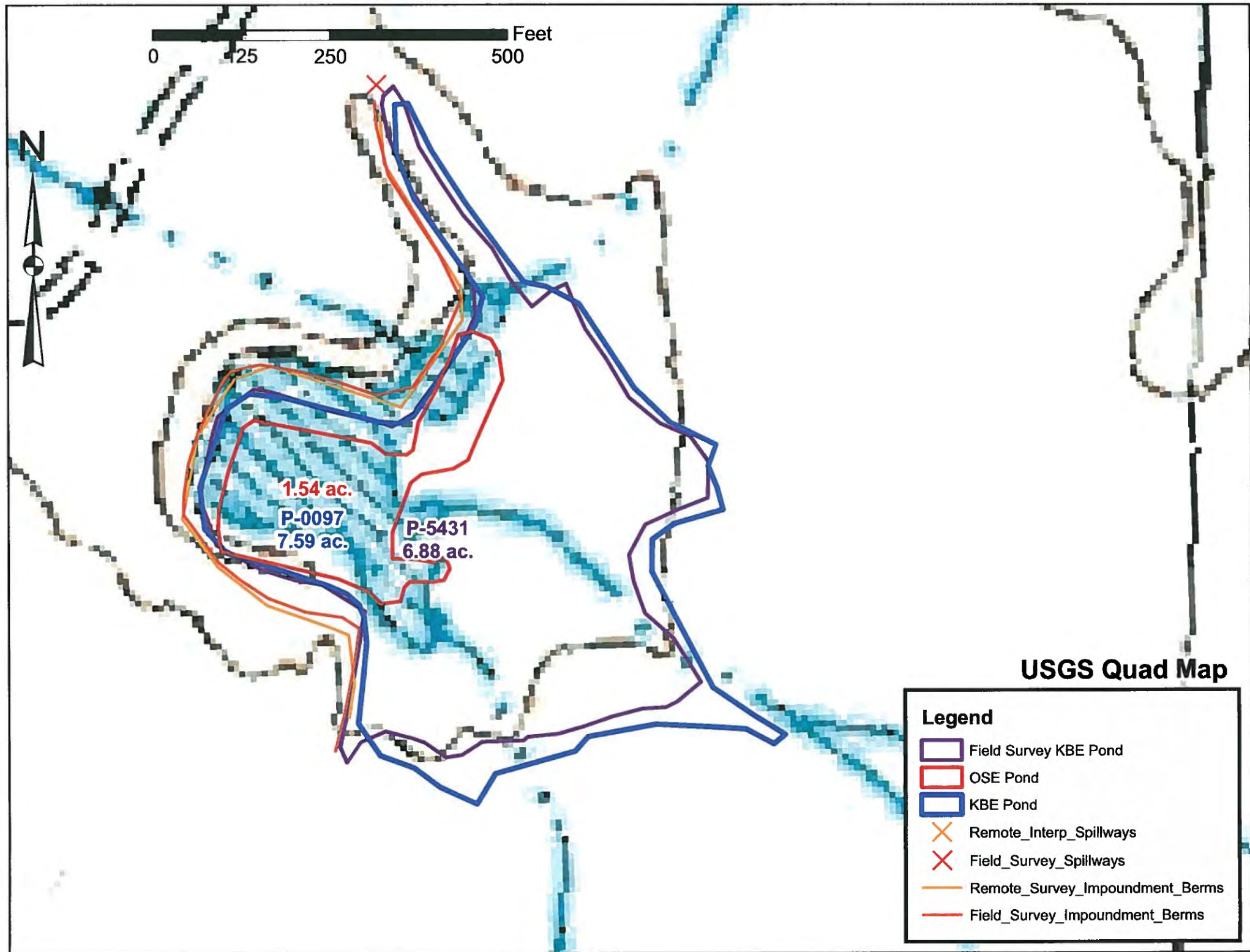
1996 Imagery

**Legend**

- Field Survey KBE Pond
- OSE Pond
- KBE Pond
- Remote\_Interp\_Spillways
- Field\_Survey\_Spillways
- Remote\_Survey\_Impoundment\_Berms
- Field\_Survey\_Impoundment\_Berms



0 125 250 500 Feet



### USGS Quad Map

#### Legend

- Field Survey KBE Pond
- OSE Pond
- KBE Pond
- Remote\_Interp\_Spillways
- Field\_Survey\_Spillways
- Remote\_Survey\_Impoundment\_Berms
- Field\_Survey\_Impoundment\_Berms